

Quiltations

Newsletter Deadlines

February	01/16
March	02/20
April	03/19
May	04/16

Karen Bettencourt
Editor
kbettenc@comcast.net

2008 Quilt Show

The forms and instructions for the 2008 Quilt Show, Boutique and advertising will be given out at the January meeting. If you cannot attend that meeting, the package will be mailed to you.



A Message from the President:

Happy New Year! 2008 is here and with it brings a wonderful lineup of exciting events for Quilters' Connection! I hope you are as enthused about the coming months as I am!

Please plan to arrive early, by 6:00 pm to our January 7th meeting in order to sign up for our Winter Free Workshop on February 23rd. Each member will have an opportunity to sign up for either a morning session or an afternoon session. The listing is enclosed again in this newsletter so that you can review the information about the workshop choices. We'll be having lunch for all participants. The free workshop is an excellent event; a fun time to socialize and meet some new faces and learn new techniques.

You can also sign up for the QC Get-Away weekend (April 11th-12th) on the 7th as well. We still have available spaces and we've opened it up to allow a QC member to bring along a non-QC member. \$100 deposit is required with balance due at the March 10th meeting.

With 2008, comes the time to get ready for our annual quilt show. We all have lots to do. I hope you've begun the "It's All About Pearls" challenge so that we'll be able to have 100% participation from every QC member! Remember to sell some ads for the quilt show booklet! Many hands makes light work -

- Ann Bonsett

Jan 2008

EXECUTIVE BOARD

Ann Bonsett, President
781-894-0778
abonsett@rcn.com

Jessica Leger, Vice-President
978-827-6611
jeleger@comcast.net

Barbara Degan, Treasurer
781-275-6549
bjdegan@aol.com

Lois Frampton, Secretary
978-692-4095
Fabulous.flowers@comcast.net

Marie Cotton, Quilt Show
508-529-9923
MLC23@aol.com

Steffi Aronson Karp, Programs
617-527-2815
Primary: Cell
617-512-9006
shula@comcast.net

Membership Chair
Nancy Howard
617-491-9881
nancy@nancy-howard.us

Karen Bettencourt, Quiltations
Editor
781-376-0678
KBettenc@comcast.net

Executive Board Meetings

February: Wed, Feb 27th, 7:00 p.m.
March: Wed, Mar 26th, 7:00 p.m.
April: Wed, Apr 30th, 7:00 p.m.
May: Wed, May 21st, 7:00 p.m.

Board of Directors

1 year - Joy Rosettos
2 year - Barbara Crane
3 year - Carolyn Rabson
Past President - Nancy Howard
President - Ann Bonsett

QC Schedules for 2007-2008

MONTHLY MEMBERSHIP MEETINGS:

Mosesian Theater and Lobby/Gallery:
January 7, 2008
February 4, 2008
March 10, 2008
April 7, 2008
May 5, 2008

WORKSHOPS:

3rd floor Rehearsal Hall
Classroom and 3rd floor Lobby
9 AM to 4 PM

2007 - MAY 2008

RESERVED WORKSHOP DATES:

February 2nd and 3rd
March 8th and 9th
April 4th, 5th, 6th and 7th

Appointed Committees

Adopt-a-fabric
Arsenal Center Liaison
Bulletin Board
Calendar
Caring Committee
Comfort Quilts

Donations

e-communications
Equipment Manager
Historian
Assistant
Information Table
Library

NEQM Liaison
Newsletter Assistant
News and Notes
New Members
Coordinator

Program Committee
07-09

Program Contracts
Raffle Quilt 2007
Raffle Quilt 2008

Raffle Quilt
Design 2008
Raffle Quilt Quilting
Sales Table
Scholarship
Webmaster
Yahoo Group
Workshop
Registration

RoseMary Koch
Nancy Crasco
Laurel Miller
Marie Geary
Ethel Shulam
Joan Gulovsen
Tina Reinhardt
Beverly Fine
Steffi Karp
Sandy Gregg
Deborah Rocha
Susan Sapolsky

Claire Leone
Martha Supnik
Diana Dow
Carol Telsey
Martha Supnik
Kate O'Leary
Nancy Wasserman

Ellen O'Sullivan
Nancy Maher

Connie Eddington
Steffi Karp
Jenny Peace
Sandy Gregg
Ethel Shulam
Patti Karp
Margaret Rolph

Carolyn Rabson
Mary Walter
Robin Fan
Barbara Evans
Suzanne Knapp
Jeanne Williamson

Donna Jean Downer



Bulletin Board Postings

Please send text and/or images at least a week before the meeting (in electronic form) to LaurelMiller@verizon.net. If you've got a business card, scan it and send it to me. This way, I can format the images to fit onto the Bulletin Boards. Thanks!

Comfort Quilts

This is the time of year when comfort quilts are most welcoming to body and soul. Please bring completed quilts to the January meeting so they can be delivered to those who need them most. I have a number of fabric labels which Ann Manzelli has printed with the QC name, giving them an identity and our professional touch. Please let me know if you need some.

This winter, quilts will be donated to the Bedford VA Hospital's Geriatric and Hospice Unit, and to the House of Hope in Lowell, a shelter for mothers and children. Children will be able to keep their quilts when they move on to more secure housing. Thank you all who offer your time and resources for the making of comfort quilts!

Tina Reinhardt

Get-Away Weekend:

We have openings available for the Get-Away Weekend, at the Sea Crest Oceanfront Resort in North Falmouth, MA. We are going to open it up to non-QC Members! If you would like to bring a non-QC member to attend with you, this will be a good way to introduce a sewing friend to QC!

Effective December 1st, we have opened up the trip for a QC members to bring along a non-QC sewing friend. \$100 deposit is required by each attendee to reserve a space. The balance due will be required at the March 10th meeting.

DETAILS

DATES:

Friday night, April 11th and Saturday night, April 12th

LOCATION:

Sea Crest Oceanfront Resort, Cape Cod, North Falmouth, MA

COST:

\$128 per night for a Single or \$76 per night for a Double
Total Cost for two nights: Single: \$256 Double \$152

The price includes breakfast on Saturday, Brunch on Sunday, Beverage Break on Saturday afternoon and all taxes and gratuity. No other meals are included. We will have access to the pool and health club. A restaurant is on site and several are within driving distance.

Questions? Please contact Ann Bonsett abonsett@rcn.com (781-894-0778) or Jessica Leger jleger@comcast.net (978-827-6611)

Boutique News

As snow covers the ground and the air turns frigid, it's a great time to hunker down and work on some things for this year's boutique which will be here before you know it! Don't forget that items can be of the fiber arts nature but also in artistic areas of other media. It's been exciting hearing what some of you have in mind and we look forward to learning what others have planned.

Now, those of you who have participated in a workshop or two might do something with your new found talents which would keep them "tuned up" and be great for the boutique to boot. So, what do you think? Anything come to mind? I was there in those classes. I know what kinds of things you could come up with!

Just as a little review, items sold in the boutique return to you 85% of your asking price. The remaining 15% helps to support the guild. Boutique vendors need to do a 3 hour volunteer stint but this is waived if you have a quilt in the show and are already participating in volunteerism. Guideline sheets for the boutique are available on the QC web site. Carrie Kramer and I (Jeanne Funk-Gedies), will also have copies at meetings if you so please.

Everyone could do one little thing! It feels good when something you've made sells! So, no more delaying. Decide what you're going to do and get going! The temperature outside is perfect! It doesn't get better than this for getting your creative capacities up and running.

We look forward to hearing from you!

Carrie Kramer kramerkrafts@gmail.com

Jeanne Funk-Gedies bjgeds@aol



QUILT HAPPENINGS

2008

March 29 & 30: Thimble Pleasures Quilt Show, Nimuc Regional High School, Upton, MA. Free Parking - \$5.00 Admission www.thimblepleasures.org

March 29 & 30: Quilter's Heritage Celebration, Lancaster Host Resort and Conference Center, Lancaster, Pennsylvania. 21st Annual Quilt Conference with workshops, vendors, exhibits, etc. Full information at www.qhconline.com

April 4-6: Pioneer Valley Quilt Show, Castle of Knights, 1599 memorial Dr. Chicopee, MA. Demos – Food – Vendors. \$5. Admission. www.Pioneervalleyquilting.com

April 14 thru 19: Machine Quilters Exposition, The Center of NH Radisson Hotel, Manchester, NH. Highlights include – New quilt competition categories; Awards Breakfast, Fashion extravaganza, Breakfast club classes; Charity Challenge, Over 20,000 in Quilt Competition prizes and money. Classes, Exhibits, Demonstrations on Machine Quilting and more – check www.MQXShow.com for full information.

April 19 & 20: Narragansett Bay Quilt Show. North Kingstown, RI High School. Over 300 quilts. Vendors, Raffles. For information call Ginny Perry, 401-397-9998

May 2 & 3: Hannah Dustin Quilt Guild Quilt Show: Hudson, New Hampshire. More information at rewahl@verizon.net

May 8-10: North of Boston Springtime Shop-Around with seven shops participating. Prizes, Demonstrations, Refreshments, Fabric Sales – more. Lots of Fun! Check out details www.SpringTimeShopAround.com

May 16 & 17: Chelmsford Quilt Guild, Spring Quilt Show. All Saints Episcopal Church, 10 Billerica Road (Chelmsford Center). Friday 12 noon to 8 pm, Saturday 9am-4pm. Admission \$5.00. More info at www.chelmsfordquiltguild.com

May 16 & 17: Souhegan Valley Quilters presents Blooming Quilts, 9-4 at the Messiah Lutheran Church, 303 Route 101 Amherst, New Hampshire. \$5.00 Admission.

News and Notes

Ruth B. McDowell is pleased to announce 2 new 5-day Designing From Nature Workshops for 2008 in beautiful Western Massachusetts.

DEERFIELD July 9-13 and COLRAIN September 10-14.

You can find complete descriptions and a registration form online at www.ruthbmcowell.com under Western Massachusetts Workshops.

- Nancy Wasserman

Membership News

PLEASE MAKE THE CORRECTIONS IN YOUR BOOKLETS.

Sue Bennett to suebennett8@yahoo.com

Carol Bikofsky to biko2@verizon.net

Nancy Crasco to ncrasco@gmail.com

Barbara Evans to 4 Jamie Lane

Diana Galson-Kooy to diana.kooy@gmail.com

Ethel Shulam to 978-535-0095

Ginny Such to ginny215@mac.com and 617-266-5335

Diana Swawn to dianajoy1@msn.net

Carol Symonds to 239 Haverhill Street, Reading, MA 01867 781-872-1158

Jayne Todd to jaynet16@verizon.net

ADD TO INTERNATIONAL

Ikuko Sakaguchi

56 Monadnock Drive,
Westford, MA 01886

isakag@prospeed.net
978-589-8109

Many thanks to those who have sent me corrections to the 2007-2008 Membership List. Please send any corrections to nancy@nancy-howard.us. We need to have a complete and up to date list to be sure that you get all our communications.

Thanks, Nancy Howard, Membership Chair

Resources: Yahoo Group

QUILTERS CONNECTION YAHOO GROUP EMAIL: jeanne@jeannewilliamson.com

Library News January 2008

COME EARLY TO BORROW BOOKS

Remember that the library table gets set up at 6pm and has to close up before the meeting begins at 7:30. If you want to borrow books, you must arrive early! If you want to reserve a book, e-mail Martha before the meeting day and she'll hold it for you.

Donated Book from Jeanne Williamson

Thanks to QC member Jeanne for sending us a copy of her newly published book "The Uncommon Quilter: Small art quilts created with paper, plastic, fiber, and surface design". It features 52 projects and gives step-by-step directions for using a great variety of materials to make quick little quilts to stimulate your creativity.

Many newly purchased books and DVDs

"Judy Martin's Log Cabin Quilt Book" presents beautiful variations on the traditional log cabin theme and valuable tips for successful piecing for both beginning and experienced quilters.

"Mastering the art of McTavishing" by Karen McTavish shows the many versions of this unique background machine quilting. A DVD is included that illustrates all the topics in the book.

"Ruth B. McDowell's Design Workshop" is a companion book to her Piecing Workshop and discusses drawing, scale, tessellation, landscapes, people, fabric selection, backgrounds, borders, embellishment, and quilting.

"Collaborative Quilting" by Freddy Moran and Gwen Marston shows what happens when the colorist insists that red is a "neutral" and the designer believes in "liberated" piecing. The resulting projects are great fun. After reading this book, nothing you can think up will seem too wild!

"Katie Pasquini Masopust Teaches You Simple Steps to Dynamic Art Quilts" (DVD) includes a very detailed demonstration of her techniques, an interview with the artist and tour of her studio, and a review of the award winning quilts that span her career.

"Mary Stori Teaches You Beading on Fabric" (DVD) demonstrates very slowly all the basics of needles, thread, beads, knots, stitches, charms, embroidery, edge treatments, etc. There's an interview with Mary and a gallery of her work. Beginners will love this lesson.

"Holding Our Own: Embracing the End of Life" (DVD) talks about the hospice movement and features the quilted portraits of elderly patients by Deidre Scherer. Recommended by Steffi Karp, several QC members asked me to order this for the guild.

2 NEW MAGAZINES

American Quilter (now sent 6 times each year) January 2008 issue has an interview and applique lesson from AQS Best of Show winner Sharon Schamber, articles on landscape appliqué, piecing and haiku poetry, antique treadle machines, no mark machine quilting, finishing anonymous quilt tops, winning quilts from the Nashville show, quilts made from fabric designed with Photoshop Elements, a simplified version of Paula Nadelstern's snowflake piecing, and an excerpt from Emilie Richards' latest quilt novel.

Quilting Art Issue 30 (Dec 2007/Jan 2008) has articles on using painted cotton batting and interfacing as surface materials, painting a discarded quilt to begin again, Pam Rubert's cartoon-like work, heavy beading, needle felting, amulet pouches, the results of the Reader's Postcard challenge, more from the Doorway to Imagination challenge, and profiles of Catherine Nicholls and Susan Vassallo.

BOOK ORDER SUGGESTIONS

Quilters' Connection Library
Book Purchase Suggestions

Title _____

Author _____

Source _____

Suggested by _____

Date _____

give to
Martha Supnik at meeting or mail to me at
601 Heald Rd., Carlisle, MA 01741

Martha Supnik 978-369-7292 Martha@Supnik.org
Diana Dow 617-624-6114



New England Quilt Museum Happenings

Mark your calendars!

January through April – Museum is closed on Sundays

Winter Madness Sale in the Museum Shop – January 2-31st

Museum Gallery & Shop Closed – Carpet cleaning & exhibit installation Jan 13th – 18th

Beginning Quilting Class with Anne Gallo – Feb 9th, 16th, and 23rd

Visit our web site for details or call 978-452-4207 ex 16

Winter Snow Policy

Check Radio & TV listings – If the Lowell Public Schools are closed the museum is closed. In case of inclement weather the museum may elect to close early. Please call before visiting.

Announcing New Evening Hours

Beginning in January, the museum will be open on the 4th Friday of each month until

8:00 PM—and 4th Friday evenings will be FREE!

The positive reception of our free day on the 20th of each month during our 20th anniversary year prompted us to continue to offer one day a month when admission fees are waived. The later closing, often requested in the past, runs through the end of April— during the months the museum is closed on Sundays. The popularity of the evening hours will determine whether we will continue to offer them after April. Area restaurants will offer specials. Call to schedule a group tour for your guild and receive special discounts in the shop. Call Mary Clare at 978-452-4207 ext 19 for details.

Puzzled & Board, opens Saturday, January, 19th and is up through March 29th.

A juried exhibition featuring quilts inspired by puzzles and board games and co-curated by QC members, Nancy Halpern and Anita Loscalzo, it features unique and witty quilts. Exhibitors include Nancy Crasco and Nancy Howard. Throughout this exhibit there are surprising visual interpretations of our favorite childhood games, presented in the unexpected yet comfortable quilted format that makes one want to play.

Quilters Bingo - Join us on Saturday, January 26, at 1 PM for a bit of mid-winter fun. Linda Baxter Lasco will host an exciting afternoon of Quilters Bingo. Play to win a variety of quilt related prizes, using quilt block names instead of numbers. One Bingo card free with admission. Additional Bingo cards are available for \$1 each.

On Saturday March 1st, at 1 PM, Nancy Halpern will present her lecture Nancy on Nancy. She'll delight quilters with insights into her own personal style and how she creates her famous breathtaking quilts.

On Sunday March 2nd, 10-4 PM, Nancy will hold her workshop, Amaze Yourself. Nancy created this "No-Sew" design workshop especially for our Puzzled & Board exhibit. Students design unique maze blocks that can be twisted and turned several ways to create their individual maze like quilts. Basic pattern and inspiration included.



Program Committee

Happy New Year from the Program Committee. Everyone who attended the November meeting was able to see the Show'n Tell of Rachel Clark bags made by 40 QC workshop participants—an amazing amalgamation of color and creativity. Rachel's coats and other pieces blew us all away with her style and humorous touches. If you were not able to attend the November meeting, or if you would like to see more Rachel Clark work, go to www.rdkc.com

The rest of this program year consists of Carol Anne Grotrian, Karen Stone and Velda Newman. Each visiting artist offers so much of herself, in addition to her expertise.

We now have the dates for the 2008-09 QC program year. Since we have yet to complete the bookings, this is my last call for 2008-09 Program Committee volunteers. At this point, Program Committee volunteers need to participate in a few conference calls for deciding whom to invite, followed by some calls to the various artists to check availability. Then, when the artists come, we need one person to act as the contact person for that particular weekend. Not hard—and a lot of fun. This is a great way to get to know more professional quilters.

In recognition of QC patronage of the Panera Bread restaurant, they have offered us some gift certificates to raffle off during our next meetings. Look for details at our January meeting. Here's what they want us to know about them:
Panera Bread

See you all on Monday, January 7, 2008, when Bobbie Sullivan wows us with her work.

Best for a quilt-filled, creative 2008,
Steffi Aronson Karp

Our New Raffle Quilt - 2009

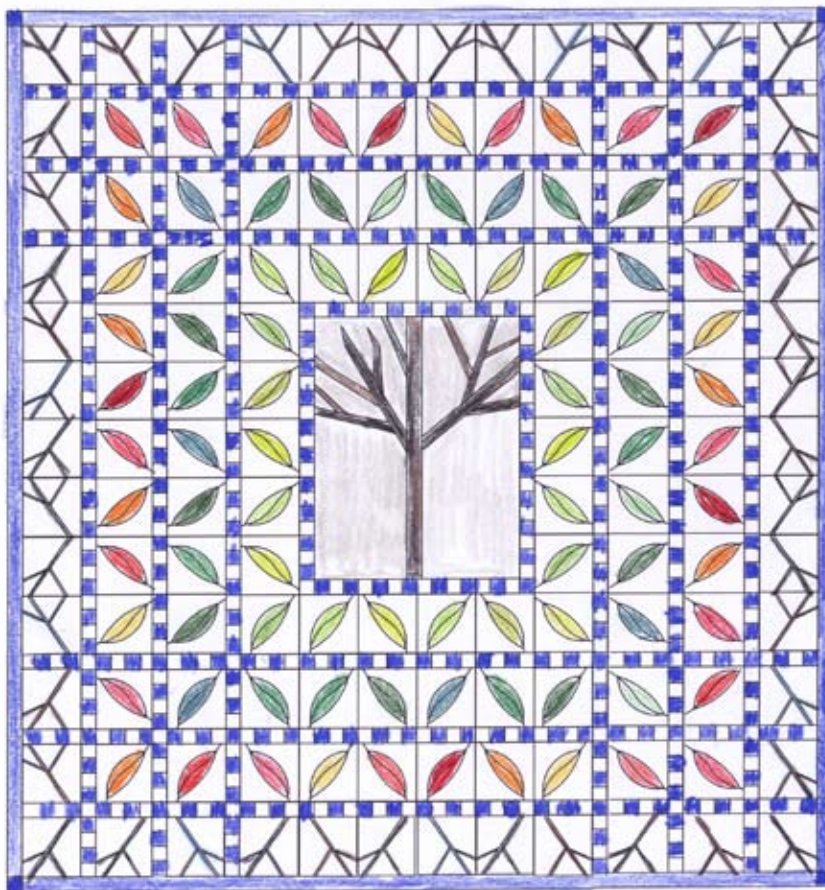
The Executive Board has approved the design for our next Raffle Quilt and I am absolutely thrilled to tell you about it. The designer for the Raffle Quilt is Betsy Habich. The Executive Board has seen the design a few times; each viewing we were captivated. It is a fascinating concept; the four seasons. The center of the quilt is a tree with each surrounding border a different season; spring, summer, autumn and winter. The leaves each capture a different color, depending upon the season, until you get to winter, and then you find blocks with branches. It is fabulous!

We had a challenge in trying to determine whether or not we should create a bed-sized quilt in traditional techniques, with machine-washable methods (appliqué, paper piecing, etc) or would we prefer to create an art size quilt that offered us the opportunity to step out in another direction and create the blocks with more non-traditional methods that would not necessarily be washable; beaded, painted, thread-play, anything goes – a true “art” quilt? It was a definite discussion.

Here’s why I am so excited! We’ve decided to do something completely different this year! This may be the first ever for any guild in New England – so it seems fitting that it should be QC, the premier guild to do something like this.

We’re going to make both quilts; a queen size traditional quilt and a smaller art quilt that can be hung. We’ll offer members the opportunity to make blocks in either method; traditional or non-traditional – this should appeal to everyone in the guild. When it is time to show the quilt at various venues; we’ll show both quilts. This will give us an opportunity to show the same design done in multiple techniques. We’ll sell tickets with the idea that whoever wins will get his or her choice of whichever quilt they want! The other quilt will then become our member’s raffle quilt! Betsy will have more details at the January meeting when the packets are ready and you’ll be able to pick them up for creation.

The raffle quilt is one of our biggest revenue streams for QC – by trying something new – a choice of two quilts for the purchase of raffle tickets, it might be a an extra special twist, just that little bit of spice!





Lectures

JANUARY 7	BOBBIE SULLIVAN
FEBRUARY 4	CAROL ANNE GROTRIAN, REPRESENTING THE CRIT GROUP
MARCH 10	KAREN STONE
APRIL 7	VELDA NEWMAN
MAY 5	MICKEY LAWLER